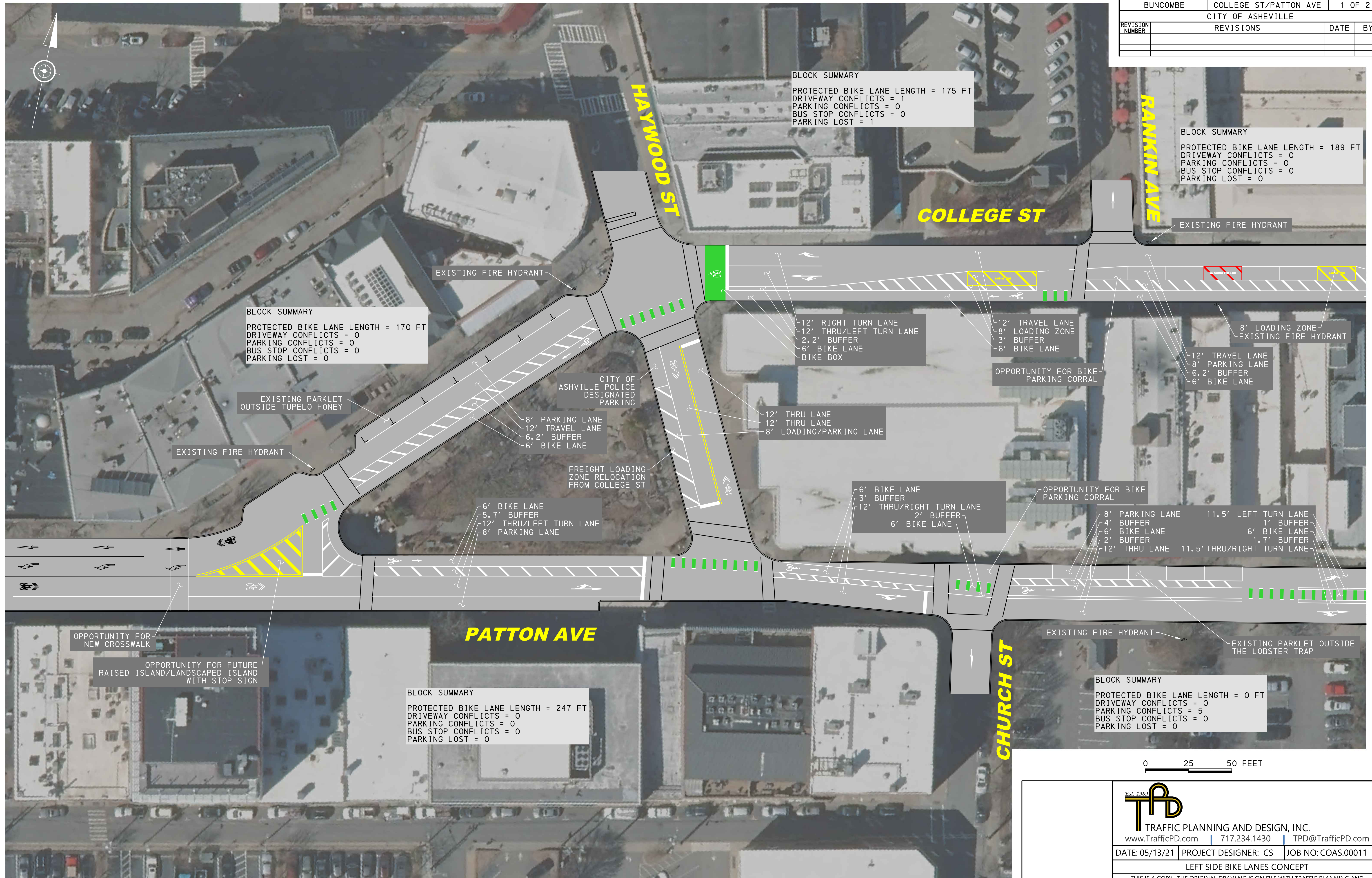



COUNTY		ROADWAYS		SHEET	
BUNCOMBE		COLLEGE ST/PATTON AVE		1 OF 2	
CITY OF ASHEVILLE					
REVISION NUMBER	REVISIONS			DATE	BY



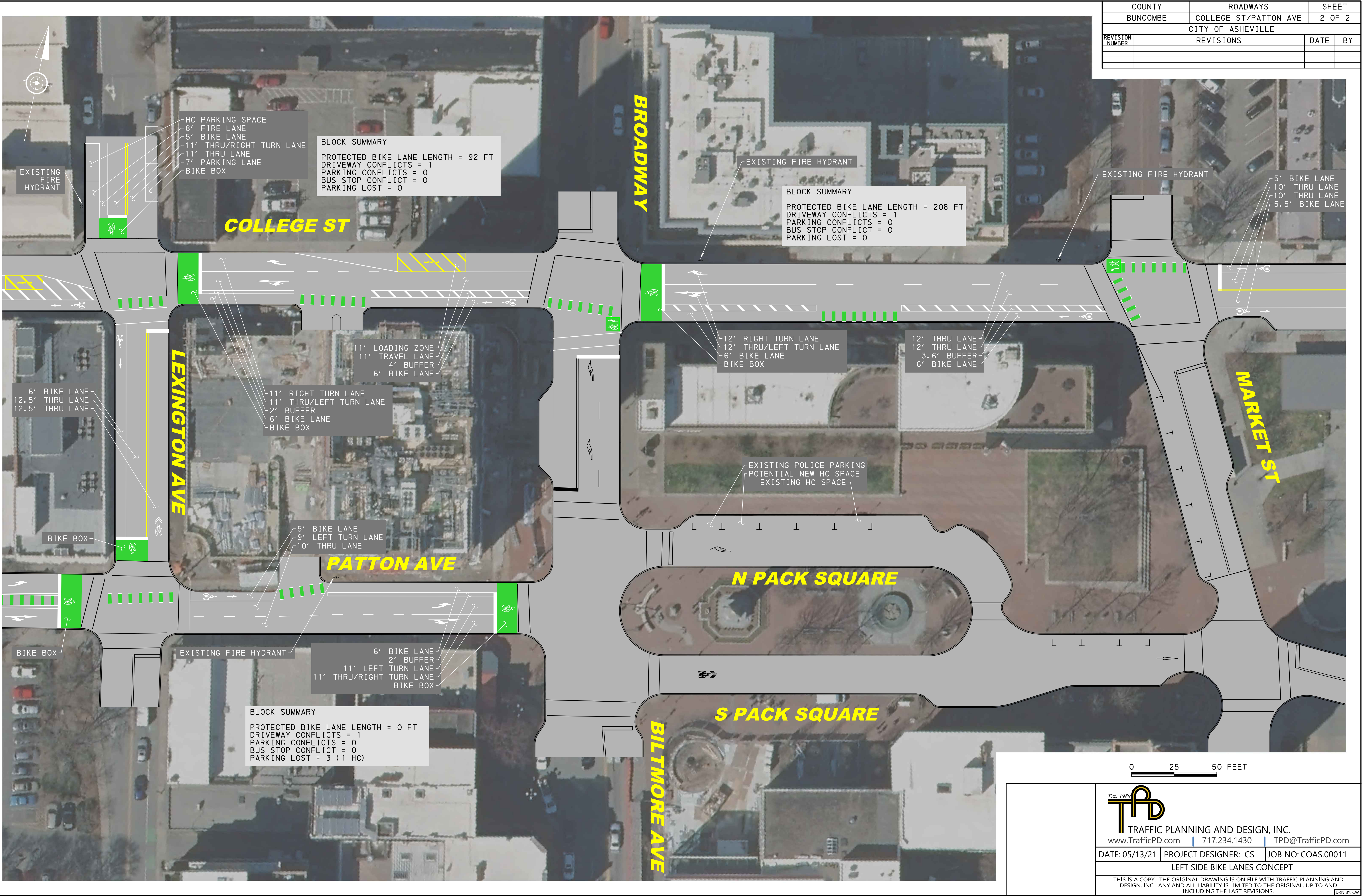
\\pd-pw.bentley.com\TPDProjectwise\Documents\Active\COAS\00011 - College Street Bicycle Lanes\CADD (HOP InRoads SS2) \Concept\2021-05-18 Right vs. Left\Left Side Bike Lanes\plan01.dgn

0 25 50 FEET

	 <p>TRAFFIC PLANNING AND DESIGN, INC.</p> <p>www.TrafficPD.com   717.234.1430   TPD@TrafficPD.com</p>		
	DATE: 05/13/21	PROJECT DESIGNER: CS	JOB NO: COAS.00011
	LEFT SIDE BIKE LANES CONCEPT		
	<p>THIS IS A COPY. THE ORIGINAL DRAWING IS ON FILE WITH TRAFFIC PLANNING AND DESIGN, INC. ANY AND ALL LIABILITY IS LIMITED TO THE ORIGINAL, UP TO AND INCLUDING THE LAST REVISIONS.</p>		
<div style="text-align: right;">DRN by: CW</div>			



p:\pw\pw-bentley.com\TPD\Project\wise\Documents\Active\COAS\00011 - College Street Bicycle Lanes\CAD00 - HOP - Hoods SS2\Concept\2021-05-18 Right vs. Left\Left Side Bike Lanes\plan02.dgn  
8/19/2021 11:51:31 PM Kchen



COUNTY		ROADWAYS		SHEET	
BUNCOMBE		COLLEGE ST/PATTON AVE		2 OF 2	
CITY OF ASHEVILLE					
REVISION NUMBER	REVISIONS			DATE	BY

Est. 1989

TPD

TRAFFIC PLANNING AND DESIGN, INC.

www.TrafficPD.com | 717.234.1430 | TPD@TrafficPD.com

DATE: 05/13/21 | PROJECT DESIGNER: CS | JOB NO: COAS.00011

LEFT SIDE BIKE LANES CONCEPT

THIS IS A COPY. THE ORIGINAL DRAWING IS ON FILE WITH TRAFFIC PLANNING AND DESIGN, INC. ANY AND ALL LIABILITY IS LIMITED TO THE ORIGINAL, UP TO AND INCLUDING THE LAST REVISIONS.

DRN BY: CW